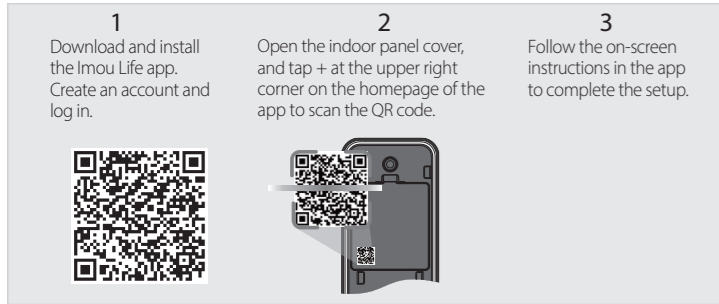


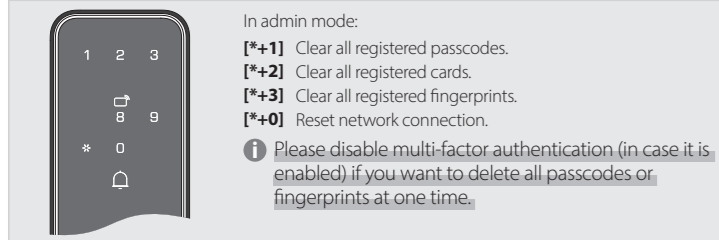
## Connect the Device to the Network

View unlock history, set up temporary passcode and multi-factor authentication in the Imou Life app.



- Please follow the instructions in the Imou Life App to complete the setup.
- After the pairing process is completed, the voice first prompts "paired successfully", then prompts "successfully connected to the cellular network".

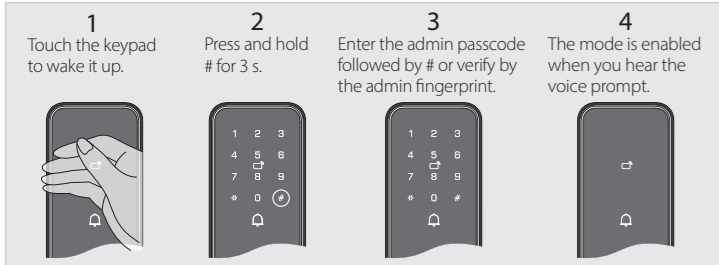
## Multi-delete



- In admin mode:
- [\*+1]** Clear all registered passcodes.
  - [\*+2]** Clear all registered cards.
  - [\*+3]** Clear all registered fingerprints.
  - [\*+0]** Reset network connection.
- Please disable multi-factor authentication (in case it is enabled) if you want to delete all passcodes or fingerprints at one time.

## Passage Mode

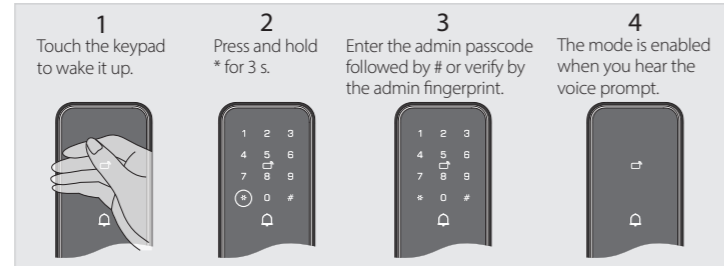
As the door stays open during the passage mode, press down the handle to unlock it.



- To disable the passage mode, wake up the keypad, press and hold the # for 3 s, enter the admin passcode or swipe the admin fingerprint when you hear the beep. Press # to end if you use the admin passcode.

## Do Not Disturb Mode

The door cannot be unlocked with any registered passcode, card or fingerprint.



- Either password or fingerprint from the admin can be used to unlock the door.
  - Admin passcode: Wake up the keypad, press \* and then enter the admin passcode followed by #.
  - Admin fingerprint: Directly swipe the admin fingerprint.
- To disable the do not disturb mode, wake up the keypad, press and hold the \* for 3 s, enter the admin passcode or swipe the admin fingerprint when you hear the beep. Press # to end if you use the admin passcode.

## One-time Silence Mode

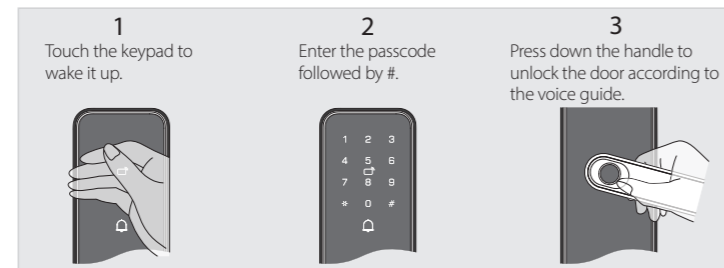
The ringtone or voice guide for operations like doorbell and unlocking will be mute for a single time.

Wake up the keypad, and then press \* to turn the mode on.

# 04 Unlock Door

## Unlock Door by Password

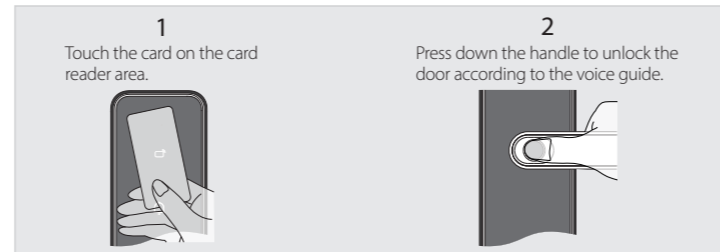
- The lock will be disabled for 3 minutes and then recovers if you incorrectly enter the passcode for 3 consecutive times.



- You can use anti-peep code to keep secure when unlocking the door. Any digits can be added before or after the actual passcode to prevent others spying nearby, supporting up to 32 digits in total, i.e. random digit + correct password + random digit.

## Unlock Door by Card

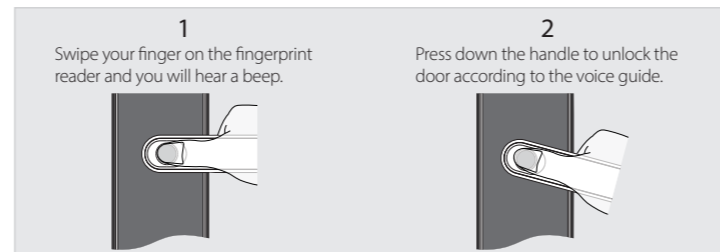
- The lock will be disabled for 3 minutes and then recovers if your card failed to be read for 3 consecutive times.



- Do not use cards that are unregistered.
- Cracked cards cannot be used. You are recommended to delete the card (if possible) or cut the card into pieces before discarding it, and then register a new card.

## Unlock Door by Fingerprint

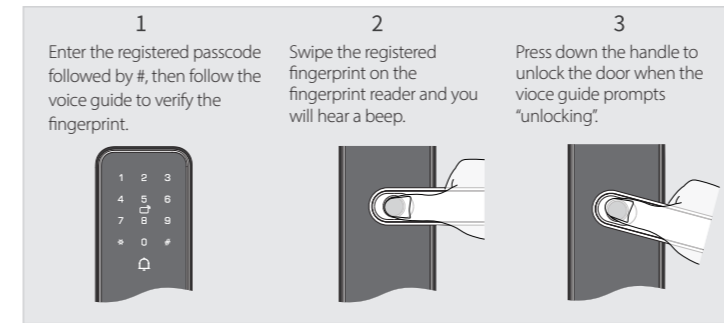
- The lock will be disabled for 3 minutes and then recovers if your fingerprint failed to be read for 5 consecutive times.



## Unlock Door by Multi-factor Authentication (Passcode + Fingerprint)

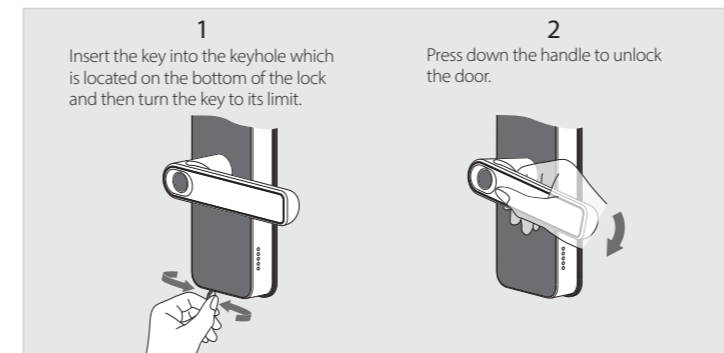
- The lock will be disabled for 3 minutes and then recovers if your fingerprint failed to be read for 5 consecutive times or your password failed to be verified for 3 times.

- You can transpose the order of step 1 and step 2.

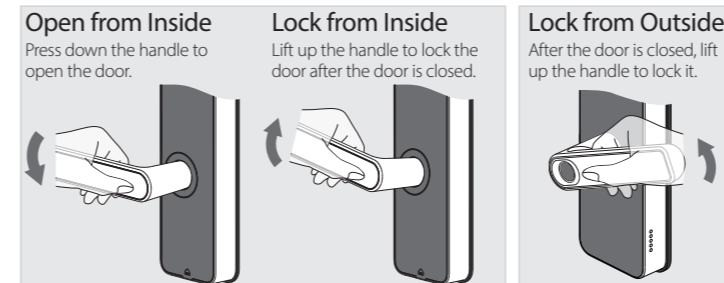


## Unlock Door by Key

- Please keep your key well for future use.
- The rotation direction of the key keeps the same as the way you open the door (e.g., turn the key left when you open the door from left).
- After you unlock the door, turn the key to its original position and then pull it out.



## Open/Lock Door from Inside Lock Door from Outside



- If you choose the tubular latch lock, the door locks automatically when it is closed.

## Specification

- If there are any changes in the specification, the actual product shall prevail.

Item	Description
Card Type	Mifare 1
Read Distance	< 10 mm (0.39")
Response Time	< 0.5 s
Card Capacity	10
Keypad Type	Touch keypad
Passcode Length	6 to 12 digits
Passcode Capacity	10
Anti-peep Code	When you unlock the door, add any digits before or after the actual passcode (max.32 digits in total).
Fingerprint Module	Capacitive reader
Fingerprint Capacity	100
Passcode + Fingerprint Unlock	Yes
Operating Voltage	4.5-6.5 VDC, four 1.5V AA alkaline batteries
Battery Lifespan	About 12 months with 10 times unlocking per day
Low Power Alarm	≤4.8VDC
Backup Power	Supply power through Type-C port
Lockout Threshold	The lock will be disabled for 3 minutes after continuous failed unlocking attempts with passcode (3 times), card (3 times), or fingerprint (5 times).
Door Thickness	35 mm-100 mm
Positioning	Center of handle hole to door edge: 50 mm
Operating Temperature	-10°C to +55°C (+14°F to +131°F)
Operating Humidity	10%-93%
Factory Reset	Yes, with button
Doorbell	Yes
Wi-Fi Compatibility	Requires 2.4 GHz Wi-Fi network

## Troubleshooting

Problem	Solution
I cannot open the door after swiping the card correctly.	Ensure your lock is correctly installed and the lock body works; otherwise contact the product supplier.
Key stuck in the lock; key does not turn; door cannot be unlocked.	Ensure your key is turned to its original position. To open the door, turn the key and then press down the handle.
Lock does not respond and it alerts low battery.	Connect to external power source through Type-c port, unlock the door, and then replace batteries.
There are scratches on the touch keypad.	The protective film can be easily scratched. Please remove it before use.
I cannot wake up the keypad.	Please place your palm on the keypad for about 1 s.
The door keeps locked after I entered the passcode.	<ul style="list-style-type: none"> <li>Ensure your passcode is correct.</li> <li>Please enter the passcode followed by #.</li> <li>Check if the lock is in Do Not Disturb mode.</li> </ul>



# User Manual

K15-W Series Smart Lock  
V1.0.0

## Important Safeguards and Warnings

This section introduces content covering the proper handling of the device, hazard prevention, and prevention of property damage. Read carefully before using the device, and comply with the guidelines when using it.

### Operation Requirements

- Do not disclose your passcodes to others and change them regularly.
- Avoid liquids from flowing into the device.
- Replace the battery in time when the power is low.
- When installing battery, always make sure the positive and negative poles are aligned correctly as the indications in the battery compartment. Wrong direction might cause faults such as rupture, leakage, and overheating.
- Do not frequently touch the keypad or touch keys with objects having a sharp end such as a ball pen.
- Do not use the lock outdoors or in severe environment with high level of temperature, humidity or salinity.
- Do not wipe the lock with strong acid or alkali, corrosive organic solvents, or polishing objects, to avoid damaging the external parts.

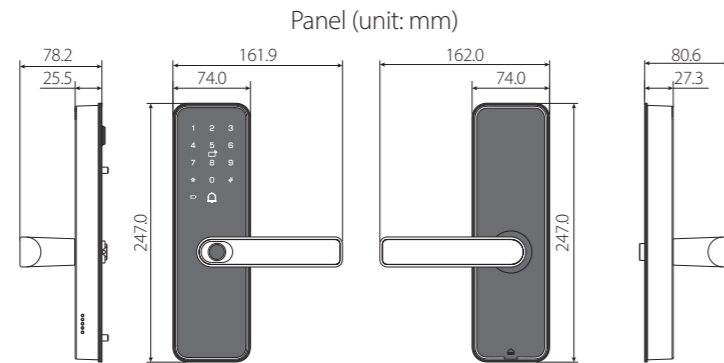
### Privacy Protection Notice

As the device user or data controller, you might collect the personal data of others such as their face, fingerprints, and license plate number. You need to be in compliance with your local privacy protection laws and regulations to protect the legitimate rights and interests of other people by implementing measures which include but are not limited: Providing clear and visible identification to inform people of the existence of the surveillance area and provide required contact information.

### About the Manual

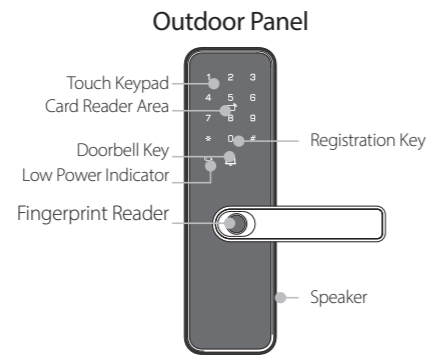
- The manual is for reference only. Slight differences might be found between the manual and the product.
- We are not liable for losses incurred due to operating the product in ways that are not in compliance with the manual.
- The manual will be updated according to the latest laws and regulations of related jurisdictions. For detailed information, see the paper user's manual, use our CD-ROM, scan the QR code or visit our official website. The manual is for reference only. Slight differences might be found between the electronic version and the paper version.
- All designs and software are subject to change without prior written notice. Product updates might result in some differences appearing between the actual product and the manual. Please contact the supplier for the latest program and supplementary documentation.
- There might be errors in the print or deviations in the description of the functions, operations and technical data. If there is any doubt or dispute, we reserve the right of final explanation.
- Upgrade the reader software or try other mainstream reader software if the manual (in PDF format) cannot be opened.
- All trademarks, registered trademarks and company names in the manual are properties of their respective owners.
- Please visit our website, contact the supplier if any problems occur while using the device.
- If there is any uncertainty or controversy, we reserve the right of final explanation.

## 01 Dimensions

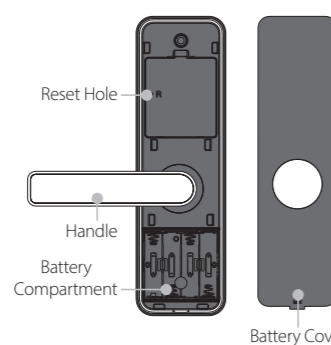


## 02 Overview

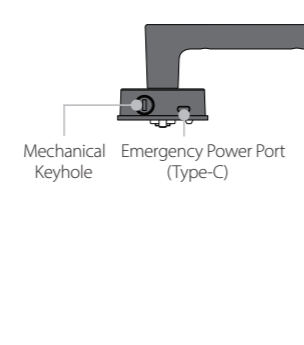
### Panel



### Indoor Panel

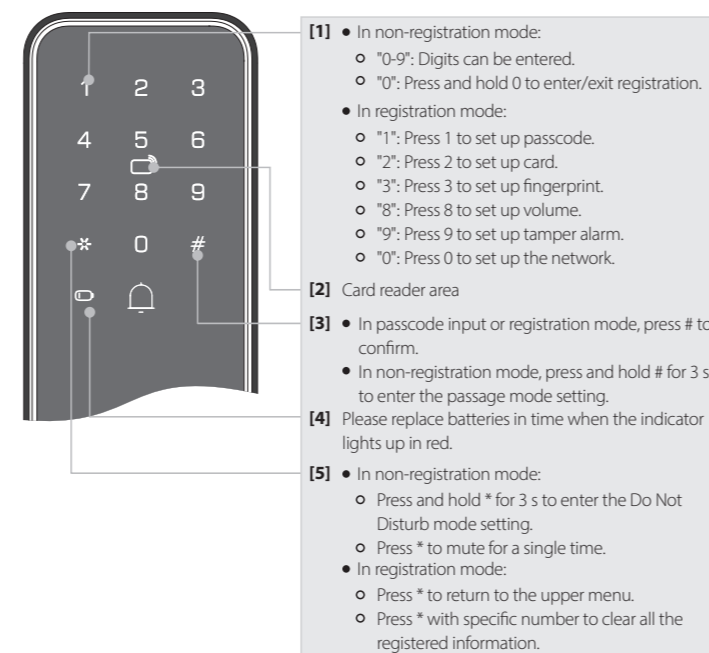


### Bottom View



**1** In case you need to reset the lock, press and hold the reset hole with a pin or a sharp end for 3 s, and then release it until you hear the voice guide.

## Quick Menu

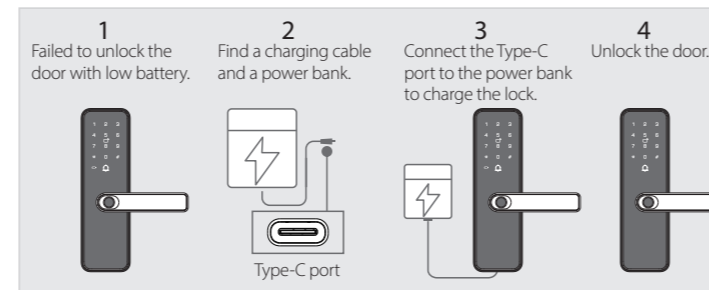


## Low Battery Alert

Please replace batteries in time once the low battery alarm goes off.

- 1** Always ensure positive (+) and negative (-) directions correct when inserting batteries.
- To avoid battery leakage, check them regularly (every 6 months recommended).
- Do not mix new and used batteries.
- Passcode, card or fingerprint unlocking might be invalid when the battery is low.

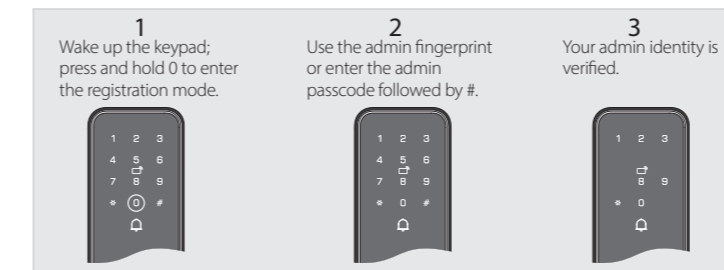
## Emergency Power



## 03 Settings

### Admin Mode

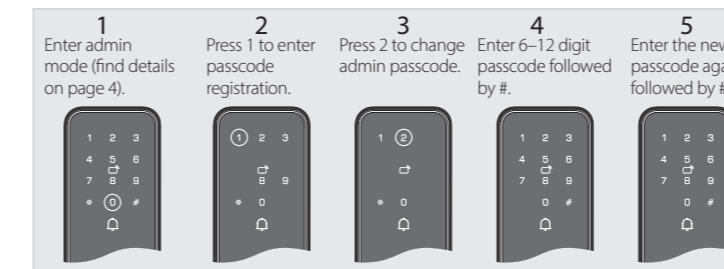
**1** The steps below should be repeated every time you want to do programming.



- 1** The default admin passcode is 123456.
- The first registered fingerprint is regarded as admin fingerprint. For detailed operation, please see the section "Register Fingerprint."

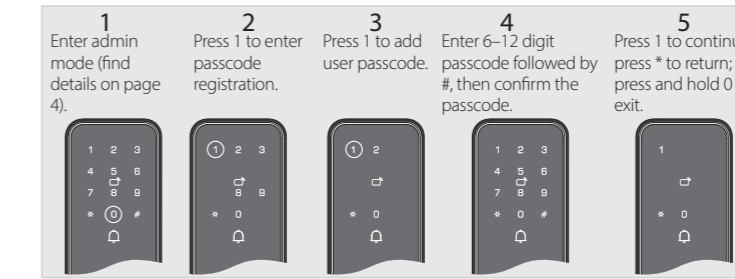
### Change Admin Passcode

- 1** The lock is in trial mode (initial state) after installation or reset and you can open the door with any unregistered passcode, fingerprint or card.
- For the sake of security, you are required to create your own admin passcode (other than 123456) before activating other unlocking methods.
- When the lock is in user mode, it cannot be unlocked with the admin password.
- If you forget the admin passcode, please enter the admin mode with the admin fingerprint and change the admin passcode.



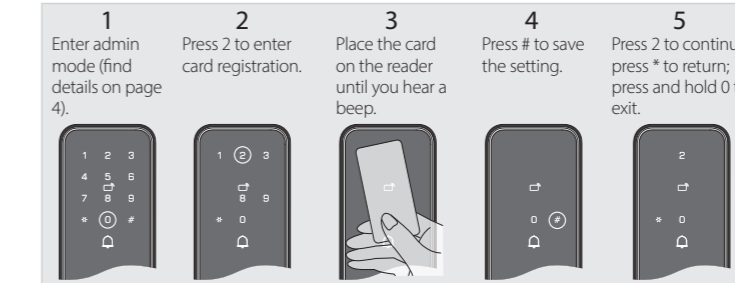
### Register Passcode

- 1** The user passcode consists of 6 to 12 digits.
- Up to 10 user passcodes can be registered. The voice alert goes off when the limit reached and the lock enters sleep mode.



### Register Card

- 1** Please keep the registered card secure. If it is lost, you'd better clear the information of all registered cards. Please see the section "Multi-delete".
- Up to 10 cards can be registered. The voice alert goes off when the limit reached and the lock enters sleep mode.



### Register Fingerprint

- 1** The first registered fingerprint is regarded as the admin fingerprint and can be the replacement of admin passcode to authenticate the admin identity.
- Please finish the registration before the lock voices it has timed out.
- Up to 100 fingerprints can be registered. The voice alert goes off when the limit reached and the lock enters sleep mode.

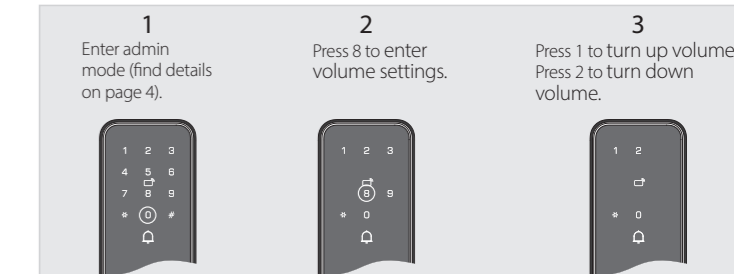


## Multi-factor Authentication

- 1** By enabling the multi-factor authentication in the Imou Life app, you are allowed to access after verifying the passcode and the fingerprint together. Unlocking with solely the passcode or the fingerprint is not supported. For detailed guidance, please refer to the instructions in the Imou Life app.

## Set Up Volume

- 1** The lock is silenced if you decrease the volume to the lowest. There will be no doorbell ringtone or voice guide on unlocking the door.



## Set Up Tamper Alarm

- 1** By enabling the tamper alarm, a 30-second loud sound alert will be triggered when the lock detects abnormal tamper.

